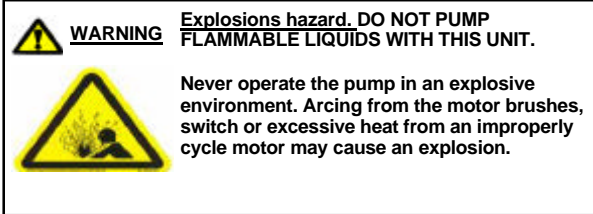


UTILITY PUMP INSTALLATION INSTRUCTIONS



FEATURES:

Suitable for Pumping: Engine oil, transmission fluids, anti-freeze solutions and low viscosity gear lubes

Dry Run Capabilities: Yes

Pump Body: Polypropylene

Diaphragm: Geolast, oil resistant

Valves: Buna-n

Motor: 12V DC with internal thermal protector

Battery Leads: 8 feet [2.4m] with alligator clips (Premium Only)

Duty Cycle: Intermittent Duty

Open Flow: 1.5 GPM [5.8 L]

Current Draw: 4.5 Amps Max.

Ports: 3/8" Female NPT

Control: Internal By-Pass 35 PSI

MOUNTING:

- Consider a location that allows for easy access if maintenance is required. The pump should not be located in an area less than one cubic foot unless adequate ventilation is provided. Excessive heat may trigger the integral thermal breaker and interrupt operation. When the motor temperature drops, the breaker will automatically reset and the pump will start.
- The pump may be mounted in any position. If mounted the vertically pump head should be in the down position so that in the unlikely event of a leak, fluid will not enter the motor.
- The pump can be positioned above the liquid tank if needed, as it is capable of 6ft [1.82M] vertical prime (with water).
- Use #8 hardware to fasten the pump. Choose a solid surface that will not amplify pump operation. The mounting feet are intended to isolate the pump from the mounting surface; over-tightening, flattering, or use of oversized screws will reduce the ability to isolate noise and vibration.

PLUMBING:


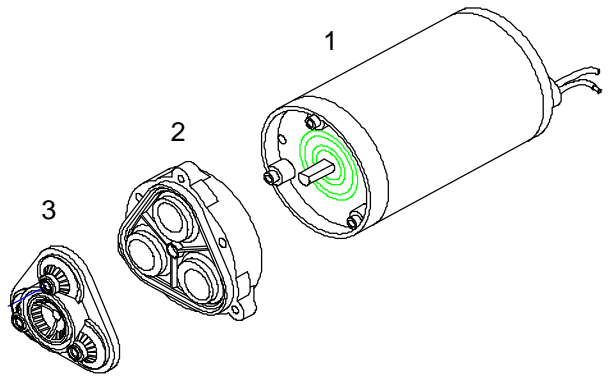
- SHURflo recommends 3/8" [9.5mm] or 1/2" [13mm] I.D. flexible high pressure tubing to both ports. Ideally, the pump ports/strainer should not be connected directly to rigid pipe. The pump's normal oscillation may transmit through rigid plumbing causing noise, and possibly loosening or cracking components.
- Installation of a SHURflo 255 series strainer on the inlet side is recommended to prevent foreign debris from entering the pump. Failure due to debris is not covered under the SHURflo limited warranty.

ELECTRICAL:

- The pump should be on a dedicated (individual) circuit, protected by the fuse indicated on the motor label.
- An "ON/OFF" switch rated at or above 15 amps is recommended. The switch must interrupt current flow on the positive (+ red) lead. Marine applications should use U/L approved marine duty (ignition protected) switches and wiring standards.
- The black lead (-) must be connected to a "known ground". The ground wire must be the same size (gauge/Mm²) as the positive wire.
- Wire size (gauge/Mm²) is based on the distance from the power source to the pump. The minimum recommended is # 14 gauge [2.5 Mm²]. Lengths of 20-50 ft. [6-15M] use # 12 gauge [4 Mm²].
- The total current draw on the circuit must not exceed 15 amps. If the pump is used in conjunction with other components, overload current protection (fuse or circuit breaker) and wire size must be for the total amp requirement of all devices on the circuit.

PREMIUM PUMPS:

WARNING Explosions hazard. Motor switch **MUST** be in "OFF" position when connecting and disconnecting alligator clips to battery terminals and ground. The switch in an "ON" position can cause an electrical spark which can result in explosion. Injury or death can occur.

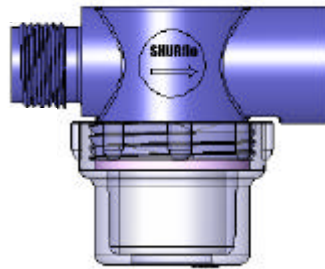
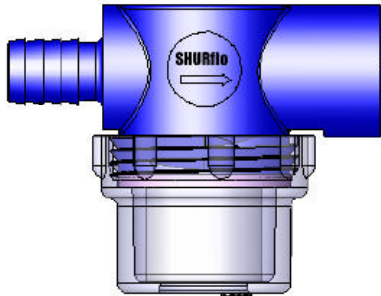
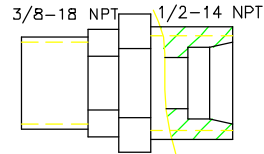
PART KITS AVAILABLE:

Number	Components	Parts Kits
1	Motor	11-148-06
2	Drive Assembly	94-385-42
8	Valve Assembly	94-391-12

Use adapter fitting when connecting a 255 strainer (included)

STRAINERS AVAILABLE:

Number	Components	Part Number
1	1/2" NPT-F x 1/2" BARB	255-113
2	1/2" NPT-M x 1/2" NPT-F	255-213
3	3/8" NPT-M x 1/2" NPT-M	8-145



LIMITED WARRANTY

SHURflo warrants Diaphragm Pumps to be free from material and workmanship defects under normal use and service for a period of one (1) year from the date of manufacture or one (1) year of use with proof of purchase, not to exceed (2) years in any event. The limited warranty will not apply to pumps that were run dry, misapplied, or are incompatible with components not manufactured by SHURflo. Pump failure due to debris or chemical incompatibility is not covered under the terms of this limited warranty. SHURflo will not warrant any pump that is physically damaged, or altered outside the SHURflo factory. Warranty claims may be resolved by an authorized dealer service center, or by SHURflo. For complete warranty details, please call your closest SHURflo office.

SHURflo reserves the right to update specifications, prices, or make substitutions.



SHURflo, LLC Headquarters

5900 Katella Avenue
 Cypress, California 90630
 Phone (562) 795-5200 • Toll Free (800) 854-3218
 Fax (562) 795-7564

SHURflo, LLC East

52748 Park Six Court
 Elkhart, Indiana 46514-5427
 Phone (562) 795-5200 • Toll Free (800) 854-3218
 Fax (574) 264-2169

SHURflo Europe, Middle East, Africa

Pentair Water Belgium bvba,
 Industriepark Wolfstee, Toekomstlaan 30
 B-2200 Herentals, Belgium
 Phone +32-14-283500 • Fax +32-14-283505