



SHURflo
Pentair Water

HIGH FLOW SMART SYSTEM INSTALLATION AND OPERATION INSTRUCTIONS

MODEL #: 5907-5304 (12V)

MODEL #: 5907-6304 (24V)

IMPORTANT

READ INSTRUCTIONS BEFORE INSTALLING THE HIGH FLOW SMART SYSTEM

Congratulations! You have purchased the finest fresh water dual pump system in the industry. The High Flow Smart System has been designed and engineered to provide you with “just like home” water flow up to 10 gallons per minute.

MOUNTING

- Mount system within 6 feet of tank for best performance.
- Mount system for easy access if maintenance is required.
- Mount system in a space of one cubic foot unless adequate ventilation is provided.
- The system may be mounted in any position.
- Choose a solid surface that will not amplify the system vibration.
- The mounting feet are intended to isolate the pump from the mounting surface; over

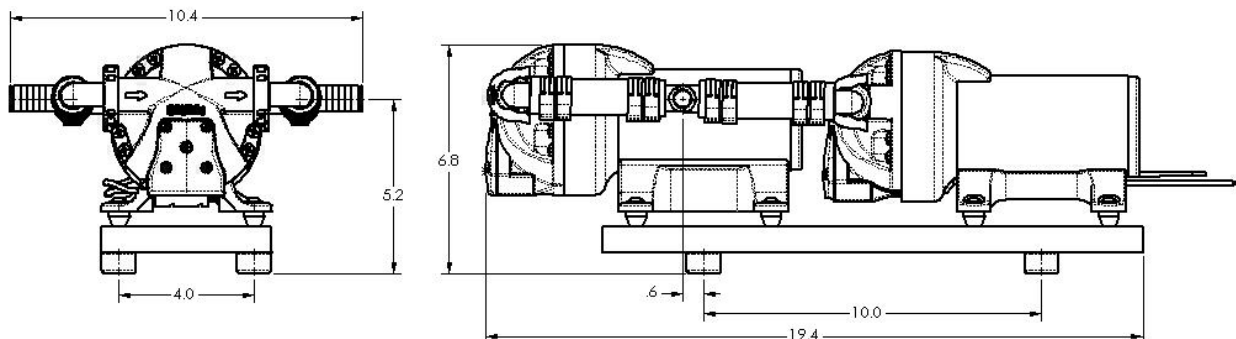
ELECTRICAL

- The pumps should be on a dedicated (individual) circuit protected by the specified fuse indicated on the motor label. **NOTE:** If both pumps are installed on the same circuit be aware of the total current generated by both pumps. Use the appropriate fuse size and wire gauge to protect both pumps (Total current draw x 113% = fuse size). See flow curve on page #2 for reference.
- A U/L approved marine duty switch (ignition protected) is recommended, and must interrupt current flow on the positive (+ red) lead.
- Smart Sensor 5.7 pump draws 15 milliamps when pump switch is on, even when pump is not running.

WARNING: SMART SENSOR 5.7 12V PUMPS

Test incoming power with a multimeter to check voltage polarity (red = +). Red pump wire **MUST** be connected to positive power or permanent damage to controller will result!!! Failures of these type are not covered under product warranty.

SYSTEM DIMENSIONS:

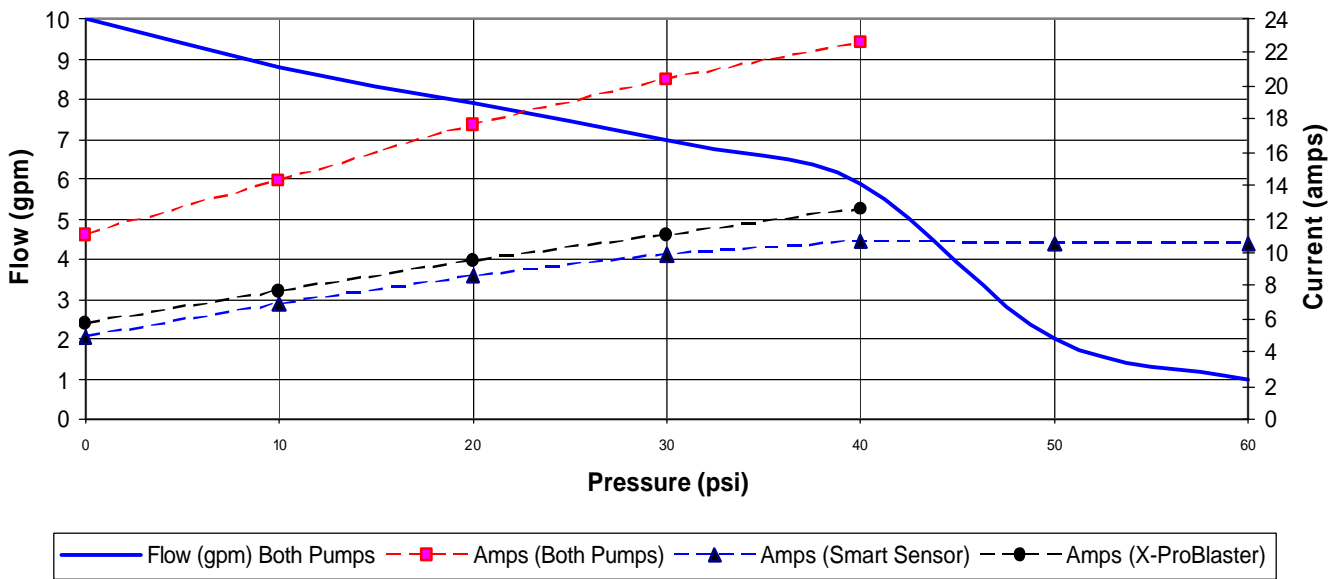


PLUMBING

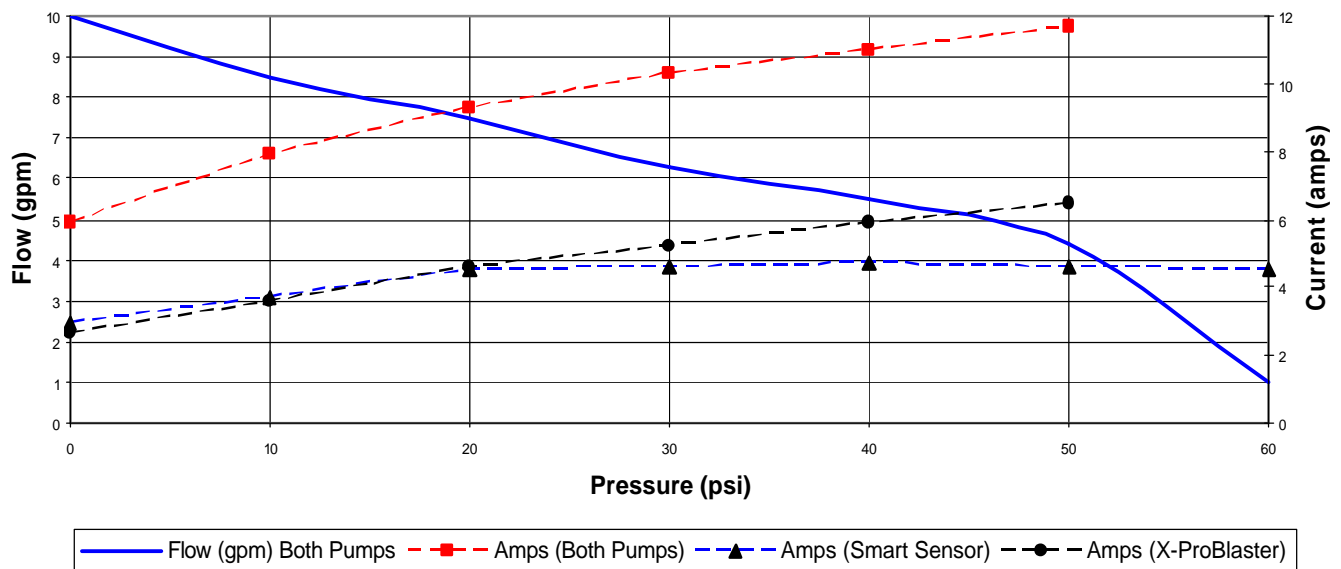
Reducing unnecessary restrictions to the inlet and the outlet tubing will allow the system to run freely, maximizing performance, quietness and eliminate the possibility of cavitation (starving the pumps).

- Installation of a 40 mesh strainer to each pump, such as SHURflo model 254 is recommended to prevent debris from entering the pumps.
- SHURflo quick-connect fittings provide easy installation and removal if required. The fittings are designed with dual o-rings, creating a seal when snapped into place.
- System may flow better with 3/4" line feeding the pumps.

Dual System Performance 5907-5304 12V



Dual System Performance 5907-6304 24V



WINTERIZING

NOTE: When used per the manufacturers recommendations *non-toxic antifreeze for fresh water* is safe for use with SHURflo pumps. **Make sure all components in the system are compatible. Hot water heaters and filters must be drained and by-passed when using fresh water anti-freeze.** Refer to the manufacturer and other equipment manufacturers for their specific winterizing & drainage instructions.



WARNING

Do not use Automotive Antifreeze to winterize fresh water systems. Such solutions are highly toxic. Ingestion may cause serious injury or death. To properly drain the system, perform the following:

1. Drain the water tank. If the tank doesn't have a drain valve, open all faucets and let the system run until the tank is empty.
2. Open all the faucets (including the lowest valve or drain in the plumbing) and allow the system to purge the water from the plumbing system, and then turn the pumps OFF.
3. Using a pan to catch the remaining water, remove the manifolds at the pump's inlet/outlet ports. Turn the system ON, allowing it to operate until the water is expelled. Turn OFF power to the pumps once the plumbing is emptied. Do not reconnect system's plumbing. It is o.k. to lightly cover pump ends to prevent bugs from entering the system.

Make a note at tank filler as a reminder: "Plumbing is Disconnected".

4. All faucets should be left open to guard against any damage.
5. Fresh water anti-freeze may be poured into drains to protect p-traps and waste system from freezing.
6. Fill system and **sanitize** before use in the spring.

SANITIZING

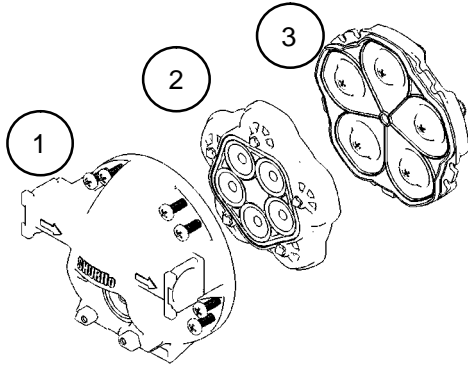
Sanitizing is recommended prior to storing and before using the water system after storage. Systems with new components, or ones subjected to contamination, should also be disinfected as follows:

NOTE: This procedure is in conformance with the approved procedures of ANSI A119.2.

1. Use one of the following methods to determine the amount of common household bleach needed to sanitize. A) 1-1/2 ounces of bleach per 10-gallon tank size. Example: 40 gallon tank = $4 \times 1.5 = 6$ ounces of bleach. B) Multiply "Liters of tank capacity" by 1.0; the result is the milliliters of bleach needed to sanitize the tank.
2. Mix the proper amount of bleach within a 1-gallon container of water.
3. Pour the solution (water bleach) into the tank and fill the tank with fresh water. Rock vehicle back and forth to splash water on tank walls and top.
1. Open **all** faucets (Hot & Cold) allowing the water to run until the distinct odor of chlorine is detected.
2. The standard solution must have four (4) hours of contact time to disinfect completely. Doubling the concentration of bleach allows for contact time of one (1) hour.

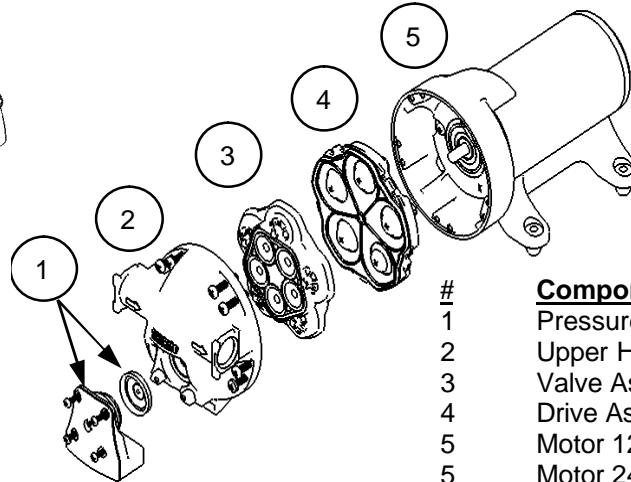
When the contact time is completed, drain the tank. Refill with fresh water and purge the plumbing of all sanitizing solution.

Smart Sensor Service Kits



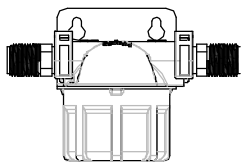
Number	Components	Parts Kits
1	Upper Housing	94-670-02
2	Valve Assembly	94-030-01
3	Drive Assembly	94-030-02

Extreme Pro- Blaster Service Kits

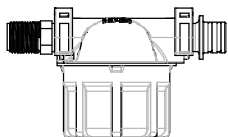


#	Component	Part Kit #:
1	Pressure Switch	94-069-00
2	Upper Housing	94-670-02
3	Valve Assembly	94-030-01
4	Drive Assembly	94-030-02
5	Motor 12V DC	77-007-17
5	Motor 24V DC	77-009-17
5	Motor 32V DC	77-010-17

MODEL 254 STRAINER (Sold Separately)



254-366
Remote Mount w/ Bracket



254-266
Direct To Pump Mount

FITTINGS INTALLATION INSTRUCTIONS

SHURflo quick connect fittings provide easy installation and removal if required. The fittings are designed with dual o-rings, creating a seal when snapped into place.



Pump clip original stage.



Step #1:
Place your thumb at the edge of the clip as shown.



Step #2:
Using your thumb, pry up edge of lock clip over lock tab. (as shown)



Step #3:
Insert strainer or fitting into quick connect port, push all the way until stops.



Step #4:
Place your thumb on top of the clip as shown.



Step #5:
Snap lock clip over fitting and lock. Pull fitting to make sure is locked in to place.

LIMITED WARRANTY

SHURflo warrants its 5907 Fresh Water system to be free from material and workmanship defects under normal use and service for a period of three (3) years from the date of manufacture indicated on the motor nameplate. The limited warranty will not apply to pumps that were improperly installed, misapplied, or are incompatible with components not manufactured by SHURflo. Pump failure due to foreign debris is not covered under the terms of this limited warranty. SHURflo will not warrant any pump that is physically damaged, or altered outside the SHURflo factory. Warranty claims may be resolved by an authorized dealer service center, or by a SHURflo service center. Returns are to be shipped with charges pre-paid. Package all returns carefully. SHURflo will not be responsible for freight damage incurred during shipping to a service center. For complete Limited Warranty details, please contact SHURflo.

SHURflo reserves the right to update specifications, prices, or make substitutions.



SHURflo, LLC Headquarters

5900 Katella Avenue
Cypress, California 90630
Phone (562) 795-5200 • Toll Free (800) 854-3218
Fax (562) 795-7564

SHURflo, LLC East

52748 Park Six Court
Elkhart, Indiana 46514-5427
Phone (562) 795-5200 • Toll Free (800) 854-3218
Fax (574) 264-2169

SHURflo Europe, Middle East, Africa

Pentair Water Belgium bvba,
Industriepark Wolfstee, Toekomstlaan 30
B-2200 Herentals, Belgium
Phone +32-14-283500 • Fax +32-14-283505