

MARINE PRODUCT DATA SHEET

OEM: 2095-273-200 (Utility Pump)

AFTERMARKET: 2095-273-200 (Utility Pump)

APPLICATION

12V DC Refrigeration cold plate circulation.
This pump may be used for general fresh water transfer.

PUMP:

Type: 3 Chamber Diaphragm
Ports: 1/2"-14 NPSM-Male.
Liquid: 130 °F [54 °C] Max
Dry-Prime: 6 feet [1.82 M]
Inlet PSI: 30 PSI [2.1 Bar] Max
Run Dry: Yes

ELECTRICAL:

Motor: 12VDC Permanent Magnet, Continuous Duty
Protection: Thermal Overload, Automatic Restart
Leads: 16 AWG, 16" [40 cm] Red +, 13" [33 cm] Black -
Fuse: 5 Amp Recommended
Control: No Control

MATERIALS:

Housing: Polypro
Valves: EPDM
Diaphragm: Santoprene
Hardware: Stainless Steel

APPROVALS:

Ignition Protection 8846, CE

WARRANTY:

1 Year Limited Warranty.
Contact SHURflo for details

SHIPPING:

Net Weight: 5.6 Lb [2.5 Kg] each
Carton Quantity: 6
Carton Weight: 34 Lb [15 Kg]
Carton Size: 24"L x 18"W x 6"H
[61cm x 46cm x 15cm]

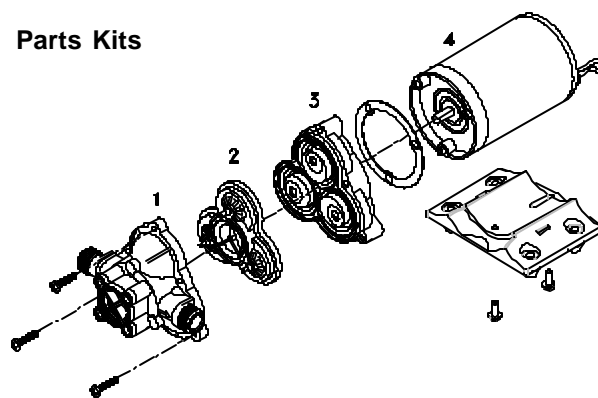
RELATED DOCUMENTS:

Catalog: MS-030-140
Installation Manual: 911-396
Applications Spec Guide: MS-020-005



Specifically designed for refrigeration cold plate circulation, this pump allows you to adjust water flow according to your system.

Parts Kits

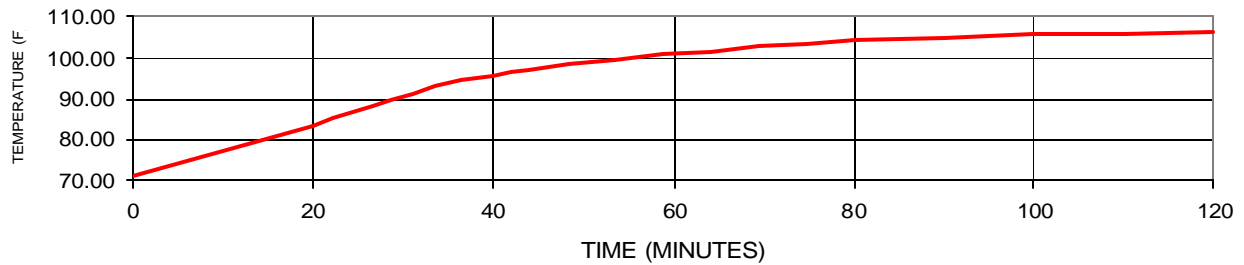


Number	Components	Parts Kits
1	Housing/Cover	--
2	Valve Assembly	94-232-06
3	Drive Assembly	94-238-04
4	Motor	94-11-187-12
5	Pump Head	--
Not Shown	Check Valve	94-237-00

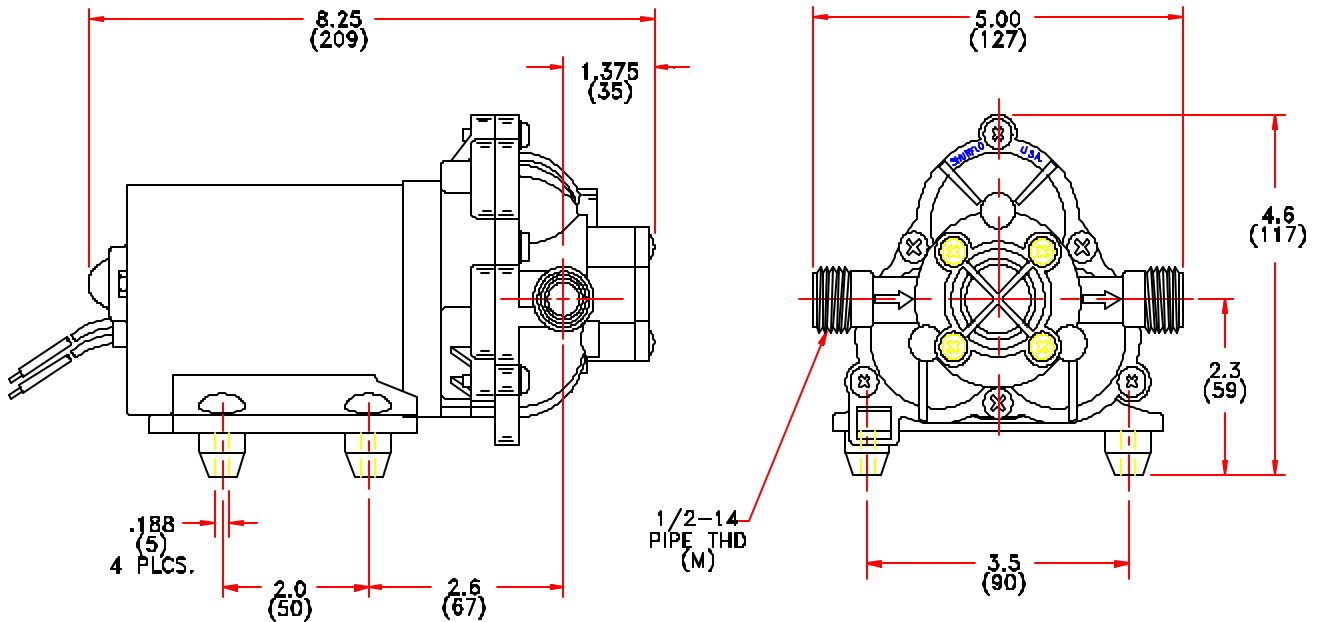
TYPICAL PERFORMANCE

PRESSURE		FLOW		CURRENT
BAR	PSI	GPM	LPM	AMPS
0.0	0	1.75	6.6	1.28
1.4	20	1.15	4.4	2.65
2.8	40	0.65	2.5	2.95
4.1	60	0.25	0.9	2.80
5.5	80	0.00	0.0	3.45

MOTOR SHELL T-RISE @ 40 PSI, 12V



DIMENSIONS [mm]



Visit our Web Site at <http://www.shurflo.com>
 Shurflo reserves the right to update specifications, change prices, or make substitutions without notice.

SHURflo
 5900 Katella Avenue
 Cypress, CA 90630
 Phone (562) 795-5200
 Toll Free (800) 854-3218
 Fax (562) 795-7564

SHURflo East
 52748 Park Six Court
 Elkhart, IN 46514-5427
 Phone (562) 795-5200
 Toll Free (800) 854-3218
 Fax (574) 264-2169

SHURflo Europe, Middle East, Africa
Pentair Water Belgium bvba
 Industriepark Wolfstee, Toekomstlann 30
 B-2200 Herentals, Belgium
 Phone +32-14-283500
 Fax +32-14-283505



Pentair Water

FLOW TECHNOLOGIES GROUP
 5900 Katella Ave, Cypress, CA 90630
 Phone (800) 854-3218 • (562) 795-5200 • Fax (562) 795-7564
www.shurflo.com