

# MARINE PRODUCT DATA SHEET

**OEM:** 8050-232-166 (Utility Pump)  
**AFTERMARKET:** N/A

## APPLICATION

12V DC Single fixture fresh water installation.  
This pump may be used for general fresh water transfer.

## PUMP:

Type: 3 Chamber Diaphragm  
Ports: 3/8" NPT-F.  
Liquid: 130 °F [54 °C] Max  
Dry-Prime: 6 feet [1.82 M]  
Inlet PSI: 30 PSI [2.1 Bar] Max  
Run Dry: Yes

## ELECTRICAL:

Motor: 12VDC Permanent Magnet, Continuous Duty  
Protection: Thermal Overload, Automatic Restart  
Leads: 16 AWG, 8" [20 cm] Red +, 8" [20 cm] Black -  
Fuse: 5 Amp Recommended  
Control: 30 PSI Internal By-pass

## MATERIALS:

Housing: Polypro  
Valves: EPDM  
Diaphragm: Santoprene  
Hardware: Stainless Steel

## APPROVALS:

Ignition Protection 8846, CE

## WARRANTY:

1 Year Limited Warranty.  
Contact SHURflo for details

## SHIPPING:

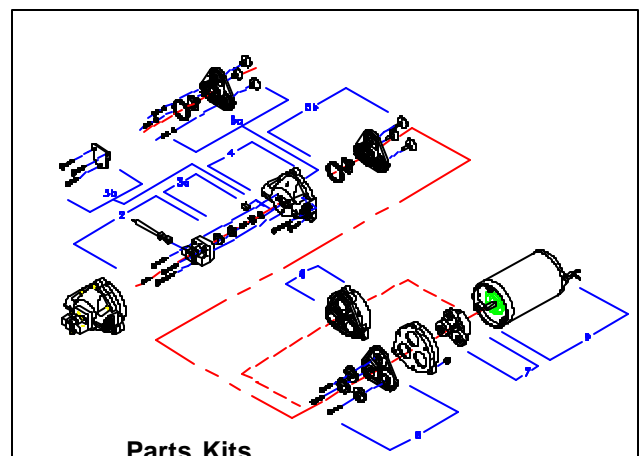
Net Weight: 4 Lb [1.8 Kg] each  
Carton Quantity: 6  
Carton Weight: 34 Lb [15 Kg]  
Carton Size: 24"L x 17"W x 10"H  
[61cm x 43cm x 25cm]

## RELATED DOCUMENTS:

Catalog: MS-030-140  
Installation Manual: 911-314  
Applications Spec Guide: MS-020-005



Incorporating SHURflo's advance motor technology that includes thermal overload protection, these pump is self-priming, easy to install and are extremely versatile-perfect for a variety of fresh water uses.



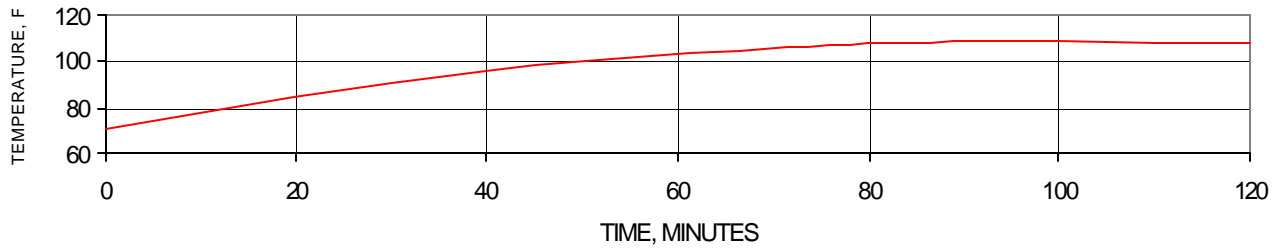
Parts Kits

Number	Components	Parts Kits
9	Motor	94-77-006-17
5a	Valve Assembly	94-391-06
8	Drive Assembly	94-385-30

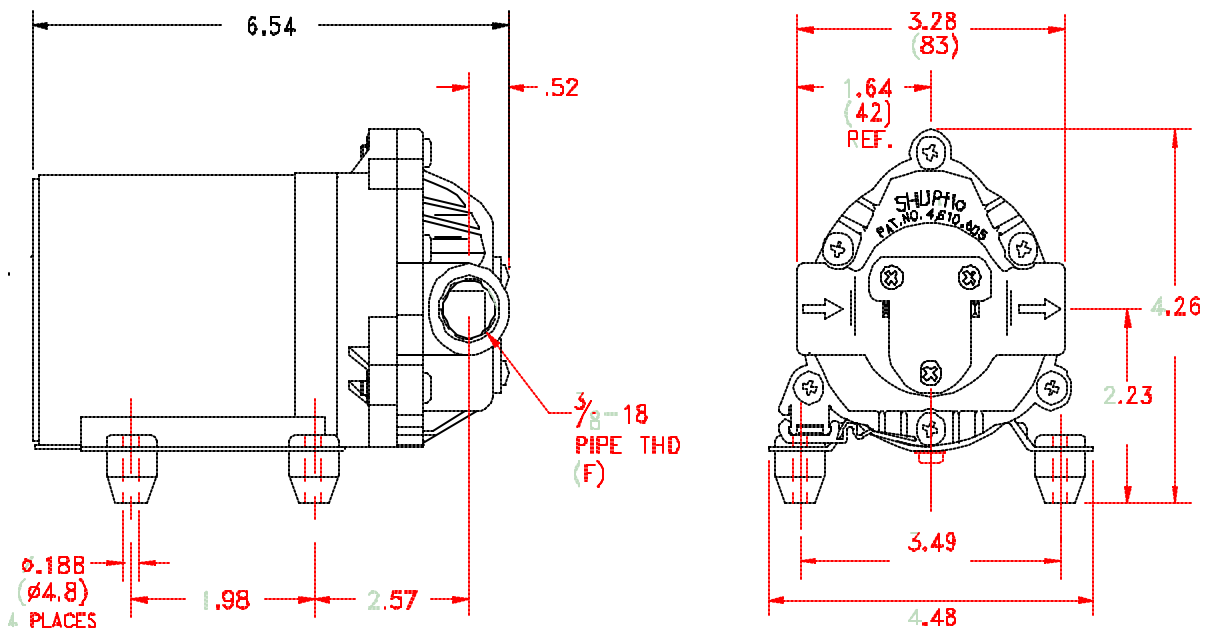
TYPICAL PERFORMANCE

PRESSURE		FLOW		CURRENT
BAR	PSI	GPM	LPM	AMPS
0.0	0	1.1	4.16	1.4
0.7	10	1.0	3.78	2.0
1.4	20	0.9	3.40	2.5
2.1	30	0.6	2.27	3.0
2.4	35	0.0	0.00	3.0

TYPICAL MOTOR SHELL T-RISE @ 40 PSI, 12V



DIMENSIONS [mm]



Visit our Web Site at <http://www.shurflo.com>  
 Shurflo reserves the right to update specifications,  
 change prices, or make substitutions without notice.

**SHURflo**  
 5900 Katella Avenue  
 Cypress, CA 90630  
 Phone (562) 795-5200  
 Toll Free (800) 854-3218  
 Fax (562) 795-7564

**SHURflo East**  
 52748 Park Six Court  
 Elkhart, IN 46514-5427  
 Phone (562) 795-5200  
 Toll Free (800) 854-3218  
 Fax (574) 264-2169

**SHURflo Europe, Middle East, Africa**  
**Pentair Water Belgium bvba**  
 Industriepark Wolfstee, Toekomstlann 30  
 B-2200 Herentals, Belgium  
 Phone +32-14-283500  
 Fax +32-14-283505



**Pentair Water**  
**FLOW TECHNOLOGIES GROUP**  
 5900 Katella Ave, Cypress, CA 90630  
 Phone (800) 854-3218 • (562) 795-5200 • Fax (562) 795-7564  
[www.shurflo.com](http://www.shurflo.com)