

# MARINE PRODUCT DATA SHEET

**OEM:** 5902-4212 (High Flow System 5.0)  
**AFTERMARKET:** 5902-4212 (High Flow System 5.0)

## APPLICATION

Multi-fixture marine fresh water installations. Other uses may include 32V DC pressurized water systems in cabins. This pump may be used for general fresh water transfer.



## PUMP:

Type: 5 Chamber Diaphragm  
 Ports: Quick Connect Fittings  
 Liquid: 130 °F [54 °C] Max  
 Dry-Prime: 6 feet [1.82 M]  
 Inlet PSI: 30 PSI [2.1 Bar] Max  
 Run Dry: Yes

## ELECTRICAL:

Motor: 32VDC Permanent Magnet, Intermittent Duty  
 Protection: Thermal Overload, Automatic Restart  
 Leads: 14 AWG, 16" [40 cm] Red +, 13" [33 cm] Black -  
 Fuse: 7.5 Amp Recommended  
 Control: Adjustable Switch. Shut-Off 45 PSI [3.1 Bar] ± 5 PSI [0.4 Bar] Restart 25 PSI [1.8 Bar] ± 5 PSI [0.4 Bar]

## MATERIALS:

Housing: Nylon  
 Valves: EPDM  
 Diaphragm: Santoprene  
 Hardware: Stainless Steel  
 Tank: Stainless Steel

## APPROVALS:

Ignition Protection 8846, CE, Tank: NSF 18

## WARRANTY:

3 Year Limited Warranty.  
 Contact SHURflo for details

## SHIPPING:

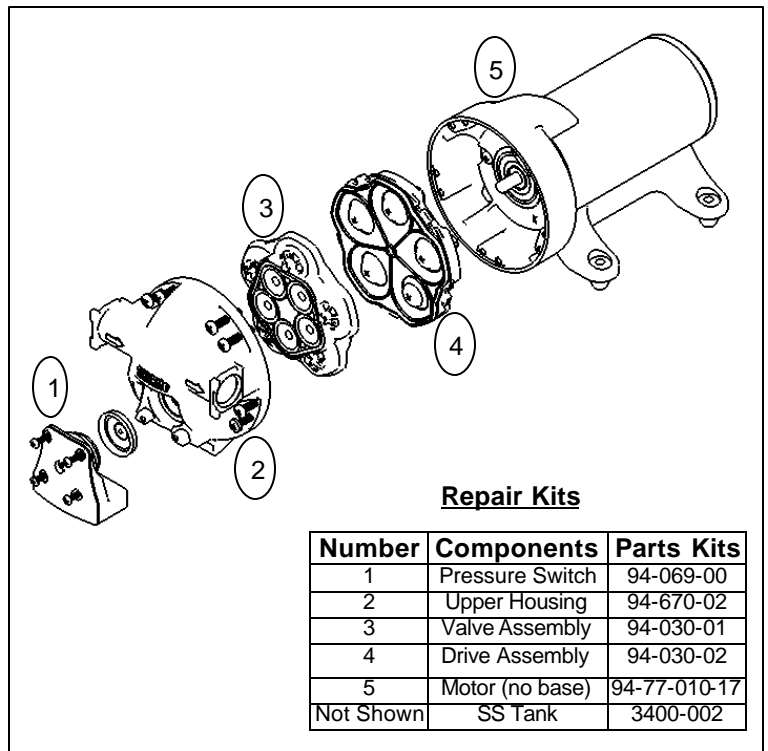
Net Weight (boxed): 21 Lbs [9.5 Kg] each  
 Carton Quantity: 1  
 Approx. Carton Size: 18"L x 15"W x 16"H  
 [45.7cm x 38.1cm x 40.6cm]

## RELATED DOCUMENTS:

Catalog: MS-030-140  
 Installation Manual: 911-670  
 Applications Spec Guide: MS-020-005



The most advance system available, these fully-automatic, quiet units deliver water smoothly and consistently. Self-priming, corrosion-resistant and NSF certified tank (Pump/Accumulator Combos).

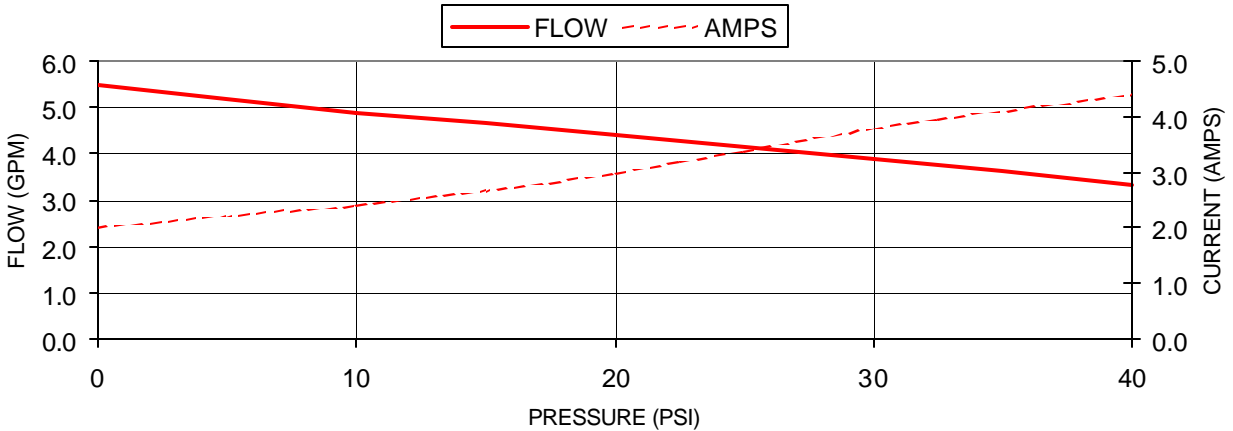


### Repair Kits

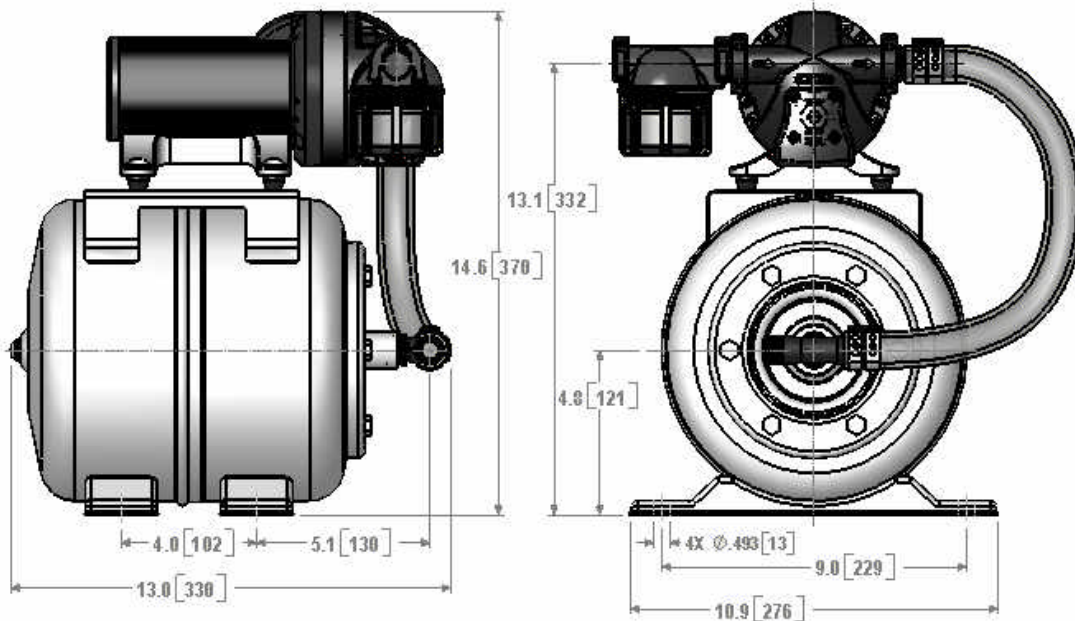
Number	Components	Parts Kits
1	Pressure Switch	94-069-00
2	Upper Housing	94-670-02
3	Valve Assembly	94-030-01
4	Drive Assembly	94-030-02
5	Motor (no base)	94-77-010-17
Not Shown	SS Tank	3400-002

**TYPICAL PERFORMANCE**

PRESSURE		FLOW		CURRENT
BAR	PSI	GPM	LPM	AMPS
0.0	0	5.5	20.8	2.0
0.7	10	4.9	18.5	2.4
1.4	20	4.4	16.6	3.0
2.1	30	3.9	14.7	3.8
2.8	40	3.3	12.4	4.4



**DIMENSIONS [mm]**



Visit our Web Site at <http://www.shurflo.com>  
 Shurflo reserves the right to update specifications,  
 change prices, or make substitutions without notice.

**SHURflo**  
 5900 Katella Avenue  
 Cypress, CA 90630  
 Phone (562) 795-5200  
 Toll Free (800) 854-3218  
 Fax (562) 795-7564

**SHURflo East**  
 52748 Park Six Court  
 Elkhart, IN 46514-5427  
 Phone (562) 795-5200  
 Toll Free (800) 854-3218  
 Fax (574) 264-2169

**SHURflo Europe, Middle East, Africa**  
**Pentair Water Belgium bvba**  
 Industriepark Wolfstee, Toekomstlann 30  
 B-2200 Herentals, Belgium  
 Phone +32-14-283500  
 Fax +32-14-283505



**Pentair Water**

**FLOW TECHNOLOGIES GROUP**

5900 Katella Ave, Cypress, CA 90630  
 Phone (800) 854-3218 • (562) 795-5200 • Fax (562) 795-7564  
[www.shurflo.com](http://www.shurflo.com)